



# The Sitzmarke

SPACE CITY SKI CLUB

www.spacecityskiclub.org



August 2012

Member  
Texas Ski Council  
Vol. 48, No. 4

**NEW AUGUST MEETING TRIP SIGNUP**  
**NEW LOCATION: The HESS Club- 5430 Westheimer**  
Monday, August 13th @ 6:30—9:00 pm

## From Mission Control

by Sandra McCunis, President

SCSC is kicking off the season this year with a special early sign up meeting for trips on Monday, August 13<sup>th</sup> at 6:30 PM. We have a new venue for our General Meetings at the elegant HESS Club which is located in the Galleria area at 5430 Westheimer between Yorktown and Chimney Rock. We will be in the San Jacinto room which has a private bar and you will be able to purchase appetizers from their bar menu.

We have planned an exciting slate of trips for the upcoming season and our Trip and Assistant Coordinators will have tables set up to display the information about their trips. We will also feature a special PowerPoint presentation for each of our trips which will start at 7:00 PM.

Those members that sign up for a trip at the meet-



ing will have their names entered into two drawings and they will be eligible to win \$50 which will be applied toward the payment on the trip of their choice. Don't forget to bring your checkbook for the deposit! You must be an active member to register for a trip so if you have not renewed your membership, you can do so at the meeting.

You don't have to ski or travel to enjoy being a member of SCSC. We also offer a variety of fun activities. Please see our Calendar of Events for a list of upcoming events. We will also have a table set up at our meeting so you will have an opportunity to sign up for one or more of these activities.

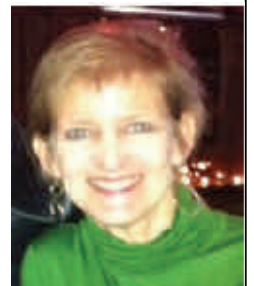
Please help us to promote SCSC by inviting your family, friends and co-workers to join us at our events. If your guest joins our club, your name will be entered into a contest for recruiting new members. The details for our contest will be posted soon. We will look forward to seeing you at the HESS Club on August 13<sup>th</sup> to kick off our new season! !

## Countdown to Liftoff

By Ann Rogers, V.P. of Trips

On your mark, get set, go!!! Trip sign-up is here, don't get left out! Sign-up for your favorite destination now and reserve your spot. All it takes is a deposit in the amount of \$150 that can be paid by check or online using Paypal. International trips require a deposit of \$300. Trip articles have been posted on the website or in the Sitzmarke for you to read, if you have questions, please contact the trip leader. I think we have some wonderful destinations for skiing this season. From our traditional Vail trip in December, to traveling to Spain or Switzerland, something for everyone. Do-

mestic trips beside Vail include Steamboat, Taos, New Mexico, Telluride, Beaver Creek and Big Sky, Montana. We have short trips to Taos and Beaver Creek so you can reduce the number of vacation days needed. Plus, don't forget our 2013 Summer Expedition will be to Ireland. Don't wait to sign-up for this trip, reserve your spot now. So make sure your membership is current and come to the August general meeting to hear all about the upcoming schedule of trips. Recruit your friends and sign-up for one, two or three trips!



## Having A Blast!

By Cindy Moore V.P. of Activities

Greetings fellow SCSC members! Well, July was action packed with what has been dubbed two very fun

events. You know the volunteer party was a success when there are still 27 people there at 10:00 p.m. (the time it was supposed to end) and it goes until midnight. Your second clue is the fact that some very sexy ladies

## Having A Blast! (cont)

black, bikini underwear, women's plain black flip flops, men's extra-large swim trunks, a ladies white cover up and sunglasses were left behind! Please call Betty at 281-374-2172 to claim any of the above items! A huge thank you to Bob and



Betty Donellan for hosting this event at their beautiful home and pool and for all of the hard work they did for us in conjunction with this event. Also a huge thanksto Bruce Lowther and Robert Clements for their slaving over the pit to make us their award-winning brisket and chicken! If you want to go next year, simply lead an activity and you will be invited next year!The other event that has come and gone with lots of praise for AC Helene Robinson was the Fun Day at Lake Conroe. About 35 of us ate a terrific lunch grilled on the boat by Bob Donellan, drank beverages of choice and played in the water where we docked in the lake. People of all ages jumped off the upper deck of the boat and went down the tube slide. The best part is there were no injuries reported! Helene did a great job of putting on this unique SCSC inaugural event.

The Stages event is full and is just around the corner August 4<sup>th</sup>. AC Sharon Simandl has put together two months of SCSC group dance lessons with a limit of 20 sign-ups. It is filling up fast with only 5 spots left at

the time of this writing. It starts September 12<sup>th</sup> and ends with a Halloween party on the last day of graduation, October 31<sup>st</sup>. It starts with a month of two step (whether you are a beginner, or know some two step already, this will be beneficial to you) and the last 4 weeks will be waltz. Contact her immediately if you want to join this class taught by dance pro Michael Stephens at The Dance Place.

The Triple P Pool Party (Ping pong, Pool and Party games)is Sunday afternoon, September 16<sup>th</sup>. It is at the Kuper's gorgeous house and pool in West Houston and Craig Campbell is the man to contact to sign-up for this incredible deal of only \$18.00! There will be a water volleyball contest, ping pong and croquet as well as beer, wine and food and prizes. So far the weather God has been smiling on SCSC with not a drop of rain on the Volunteer Party or the Lake Conroe Day. Hopefully the weather keeps this trend. If not, this party will go rain or shine. Sign up now before it is sold out!

The SCSC Excom decided to keep the traditional Gala with all types of dancing. I think I have found the perfect new place for a November 2<sup>nd</sup> Gala event. I know, it is a bit early, but it is our club's job to kick off the Holiday season for Houston! More details will be given on this event in the next issue, after it is official. Make sure you save this date, as you will want to attend with, or without, a date. The price will be MUCH less than in the past for this elegant event.

## Space City Ski Club goes SOCIAL!



Join our email list  
or sign-up on [spacecityskiclub.org](http://spacecityskiclub.org)

Like us on Facebook  
[facebook.com/spacecityskiclub](https://facebook.com/spacecityskiclub)



Follow us on TWITTER@spacecityski





*Happy Hour Thurs, June 28th at Rainbow Lodge*



## SCSC Ski Trip Schedule 2012—2013

**\*\*Trip Price Cash/Check Discounts (Domestic)—**Subtract \$50 on Full Trip Pkgs & \$35 on Land/Short Trip Pkgs

Destination	Trip Dates	FPD	Trip \$	TC	ATC
Galapagos TSC Summer Expedition (Weds-Fri)	Aug 1-10, 2012	19-Mar-12	Land Only \$3,563 Cash Disc \$100	Melinda Hughes home@angeloproductions.com 936-825-7039	
Vail, CO—Short Trip	Dec 8-12, 2012 (Sat-Weds)	30-Oct-12	Land \$594	Judy Schiro jschiro1@comcast.net 832-689-9365	
Vail, CO—Long Trip	Dec 8-12, 2012 (Sat-Sat)	30-Oct-12	Land \$924	Judy Schiro jschiro1@comcast.net 832-689-9365	
Steamboat Springs, CO TSC Traditional	Jan 12-19, 2013 (Sat– Sat)	12-Nov-12	Full \$1,423 Land \$904	Anne M. Thomas annemthomas1@yahoo.com 713-589-3660	Melinda Hughes
Granda & Torremolinos, Spain TSC Winter Expedition	Jan 25-Feb2, 2013 (Fri-Sat)	12-Nov-12	Full \$2,127 Land \$1,115	George Lopez GJL_ASTI@yahoo.com 856 296 9399	
Zermatt, Switzerland	Feb 1-9, 2013 (Fri-Sat)	12-Nov-12	Full \$2,243 Land \$1,225	Arlen Isham aisham@consolidated.net 713-560-0187	
Telluride, CO TSC Winter Shootout	Feb 9-16, 2013 (Sat-Sat)	12-Nov-12	Full \$1,367 Land \$826	Betty Donellan bettyrelaw@gmail.com 310-775-9215	
Taos, NM Short Trip	Feb 16-20, 2013 (Sat-Weds)	12-Nov-12	Full \$1,103 Land \$634	Lynda Meyer lynda_meyer@yahoo.com 713-775-9215	
Taos, NM Long Trip	Feb 16-23, 2013 (Sat-Sat)	12-Nov-12	Land \$947	Lynda Meyer lynda_meyer@yahoo.com 713-775-9215	
Mt. Bachelor, OR Long Trip	Feb 23-Mar2, 2013 (Sat-Sat)		Full \$1,297 Land \$726	Ellen Eastham eeastham@prodigy.net 281-989-9935	
Beaver Creek, CO	Mar 5-10, 2013 (Tues—Sun)	12-Jan-13	Full \$1,169	Helene Robinson helenerobinson@mac.com 954-253-1681	
Big Sky, Montana TSC Final Showdown	Mar 9-16, 2013 (Sat-Sat)	9-Dec-12	Land \$963	Candance TenBrink Candance@ctenbrink.com 312-543-1151	Abhi Gami
Ireland	Sept 6 -14, 2013 (Thurs-Fri)	13-May-13	Full \$1,983 Land \$1,011	Sandy Wellhausen Sandywp.ski@gmail.com 281-996-8653	Sean O'Brien



# 2012-2013 Ski Trip Descriptions

## VAIL, COLORADO

Long Trip - Sat, Dec 8 - Sat, Dec 15

Short Trip - Sat, Dec 8- Weds, Dec 12

TC- Judy Schiro Email: [jschiro1@comcast.net](mailto:jschiro1@comcast.net) Home: 713.939.8235 Cell: 832.689.9365

Trip Prices: Long Trip Land Only Package - \$924 (\$889 cash)

Short Trip Land Only Package - \$594 (\$569 cash)

We are headed back to Vail for our annual ski trip December 8-15 for the long trip and 8-12 for the short trip. This year we are offering LAND ONLY packages on this trip. Choice of flights are United Airlines #UA5498 that leaves Houston at 7:25am and arrives in Denver at 8:53am or Southwest Airlines #4899 that leaves Houston at 8:15 a.m. and arrives Denver at 9:45 a.m. There will be a bus at the airport to take us to Lionshead in Vail at approximately 10:45a.m. Return flights will be on Wednesday so that the participants can still ski that morning and then catch the 4:50pm #372 flight on Southwest Airlines. If you want to take United Airlines then you will need to make your flight arrangements for after that time. On the Saturday return, the bus will leave in time for the Southwest Airlines #1689 flight leaving Denver at 1:10pm. For those taking United Airlines they will need to make arrangements to reserve a flight after that time. Due to renovations at Lions Square Lodge we are staying at Montaneros, just a short walk away from Lions Square Lodge. They offer complimentary tea/coffee in the lobby, heated swimming pool, hot tub & sauna, parking, wireless internet, humidifiers and hair dryers and they have a room to store your skis. Their condos have full kitchens and spacious living rooms. Montaneros will have a welcome party with cheese/wine for us on Tuesday evening.

We will do our usual stop at the grocery/liquor store for those necessary items and then arrive early for those of you to rent your skis and get yourselves organized. We will have our club welcome party on Saturday evening with lots of food/drink so that you can get your lift tickets, meet the other participants and organize with your skiing buddies as to where to meet and where to ski. Lift tickets are also accepted at Beaver Creek, Breckenridge, Keystone and Arapahoe Basin for those of you who would want to venture away to another mountain.

For those few of you that have never joined us, this is the year. Vail is a huge mountain boasting 5,289 acres of skiing/snowboarding and 300 days of sunshine. Of course, everyone will want to check out those fabulous world-class restaurants and night life.



**Don't Miss The Boat! Steamboat is hosting the TSC Traditional Ski Week. And, in January, Steamboat will be celebrating the resort's 50-year anniversary. Join us for the SCSC/TSC spectacular "golden anniversary" trip.**

## STEAMBOAT SPRINGS, COLORADO - TSC Traditional

Sat, January 12-Sat, January, 19, 2013

TC - Anne M. Thomas Email: [AnneMThomas1@yahoo.com](mailto:AnneMThomas1@yahoo.com) Cell: 713.589.3660

ATC - Melinda Hughes

Trip Prices: Full Package - \$1,423 (1,373 cash price)

Land Package- \$904 (\$869 cash price)

Nestled quietly in the Colorado Rockies below one of North America's largest ski mountains, sits a small ranching community that serves as a constant reminder that the Old West is alive and well. Never far from its ranching roots, Steamboat remains firmly linked to a Western tradition that sets it apart from every other ski resort. It captures the romance from its old west, early pioneer days and retains its true western heritage and old fashioned hospitality. As an example, just look at the trail names- Quickdraw, Longhorn, Buckshot, Cowboy Coffee and a high-speed quad chairlift named Pony Express.

### Getting there is easy with Space City!!

SCSC has booked DIRECT flights from IAH to Hayden Airport, which is a quick and convenient 22 mile bus ride to the ski slopes. Want to use miles or drive, no problem. We have many land packages available.

Lodging - WOW. We've raised the bar for this TSC trip as, once again, Space City returns to the luxurious ski-in Kutuk Condos.

- Ski Time Square location - 75 yards to the Christie Lift On-site clubhouse; Two outdoor hot tubs
- Free high-speed Internet access in each unit, a business center and wireless Internet access in the clubhouse
- Complimentary long distance phone calls
- On-site complimentary laundry facilities
- Complimentary morning coffee & doughnuts in clubhouse
- Covered parking garage
- Complimentary evening shuttle.
- Large sun deck with gas grills
- Bell staff & concierge services
- Direct dial telephones & message services
- Private ski lockers



# 2012~2013 Ski Trip Descriptions

## STEAMBOAT SPRINGS (cont)

This ski trip has the BEST accommodations for skiers and non-skiers alike. It is well worth the money to have great lodging and direct flights

### The Mountain Experience - Top to Bottom

Since 2007, nearly \$30 million in on-mountain improvements have erupted at the Steamboat Ski Area -all designed to make your visit even better! Look forward to enhanced terrain to challenge all levels of ability, faster and more comfortable chairlifts, expanded culinary options and remodeled restaurants, high-tech snowmaking and much more. 2 of the newer chair lifts are now powered by renewable energy.

Downtown Steamboat Springs has an elevation of about 6,700 feet and the summit is at 10,568 feet - so a little less altitude than some resorts if that is a concern of yours. With 164 trails, 18 lifts, 3 terrain parks, and nearly 3,000 skiable acres, Steamboat's 6 peaks are filled with world-class groomed cruisers, bumps, steeps, open meadows, legendary trees and Mavericks Super-pipe. There is something for all ages and abilities for skiers and boarders. The Trail Classification ranges from 14% Easier, 42% More Difficult and 44% Most Difficult.

**Ski Time Square has had some major upgrades** - including improved traffic flow, civic improvements and vibrant landscaping designs with the creation of a new Promenade & Plaza. New at Gondola Square is a fully-heated, glass enclosed facility just steps off the heated promenade. The all-season, European-inspired Umbrella Bar features floor to ceiling windows for year-round enjoyment. In addition, a new outdoor fire pit adds to the fun at the base area.

### TSC Ski Week Activities

**We are planning plenty of activities so SCSC participants and TSC clubs can mix and mingle. The ski week events include:**

- TSC Welcome Reception and Farewell Dinner-in Thunderhead Lodge at the top of the Gondola.
- Both functions promise plenty of good food, drink tickets and music.
- Mountain picnic lunch at Bashor Picnic Area (included). (Nonskiers have option to take a snowshoe tour that stops at picnic area for lunch.)
- Exclusive TSC - Ski with an Olympian - Join Billy Kidd or other Steamboat Olympians for free pointers & runs down the mountain.
- Club and individual NASTAR races .
- Discounted Lift Tickets with TSC pricing
- Poker Pub Crawl
- Optional guided snow shoe tour with a Yampatika naturalist
- SCSC Condo party
- Daily - Complimentary mountain tour for intermediate ski/ snow-board
- Après Ski - Complimentary Kenwood/Korbel Wine Tasting

### Other Après-ski events

Besides this usual list of fun winter activities, to celebrate their 50th anniversary, Steamboat Ski Resort is planning an amazing week filled with additional concerts, torchlight parade, fireworks show, laser light show, vintage ski race, 1960's fashion show & much more! The place is going to be hopping and it will dazzle and shine!

For another unique adventure - just a few miles outside of town is the famous Strawberry Park natural hot springs. It is open day or night, but relaxing under a beautiful starlit sky (hopefully!) is heavenly.

**Join your fellow Space City Skiers for this golden opportunity to experience the year's best wild west ski adventure. Sign up begins August 1<sup>st</sup> and airline seats are limited. Register early.**

## GRANDA + TORREMOLINOS, SPAIN

**Fri, January 25—Sat, February 2, 2013**

TC: George Lopez

Email: [gjl\\_asti@yahoo.com](mailto:gjl_asti@yahoo.com)

Cell: 856 296 9399

Trip Prices: Full package \$2,127 (\$2,067 cash)

Land package \$1,115 (\$1,080 cash) Single supplements only \$260 additional!

**TSC Winter expedition to Granada Spain.** An extraordinary trip that offers opportunities for skiing, touring, dining & night life, as well as **time on the beach!**

### FULL TRIP PRICES INCLUDE:

- \* Air between Houston and Malaga Via Delta
- \* Round trip transfers between Malaga and Granada in private motorcoach with English speaking assistance
- \* 5 nights accommodations in Granada at the Hotel Carmen [www.hotelcarmen.com](http://www.hotelcarmen.com)
- \* Full Breakfast buffet and dinner daily at the Carmen
- \* Welcome drink and resort orientation in Granada [www.granadainfo.com](http://www.granadainfo.com)



# 2012-2013 Ski Trip Descriptions

## GRANADA, SPAIN (cont)

- \* Gala / Welcome Party in Granada at the Palacio Del Capricho featuring a bullfight, dancing to a DJ and Two Drinks per person
- \* Transfer between Granada and Torremolinos in private motorcoach with English speaking assistance.
- \* 2 nights accommodations in Torremolinos at the Melia Costa Del Sol <http://www.melia-hotels.com/en/hotels/melia-costa-del-sol-2916.html>
- \* Breakfast Buffet daily in Torremolinos

- \* Guide & Hospitality desk each evening at the hotel.
- \* Optional Tour Program
- \* All Local Taxes
- \* Passport Cases and Luggage Tags
- \* Special Holiday Souvenir Commemorative Pin

### Optional activities include:

\*Pre and Post trip extensions are in the works but not available yet

Sierra Nevada Ski Area [http://go-sierranevada.com/en/ski\\_slopes/ski\\_slopes.html](http://go-sierranevada.com/en/ski_slopes/ski_slopes.html)

**SIERRA NEVADA 3 day SKI PASS** \$150, \$120 if over 60

### OPTIONAL DAY EXCURSION AND EXTENSIONS TOURS

#### FROM GRANADA:

Full day tour of Granada and the Alhambra.

Full day tour to the White Villages on the East coast of Spain.

- \* Full day tour to Cordoba.

#### FROM TORREMOLINOS:

Full day tour to Gibraltar.

Full day tour to Tangier, Morocco. (unless opting for Morocco extension)

## SKIING ZERMATT, SWITZERLAND

**Fri, February 1 to Sat, February 9, 2013**

TC: Arlen Isham Email: [aisham@consolidated.net](mailto:aisham@consolidated.net) Cell: 713-560-0187

Trip Prices: Full Package: \$2,243 (\$2,178 cash)  
Land Package: \$1,225 (\$1,190 cash)

- Wonderful, high and extensive slopes in four varied areas
- Charming, if rather sprawling, old mountain village, largely traffic-free
- World's best mountain restaurants
- Smart shops
- Spectacular high mountain scenery
- Reliable snow at altitude
- Nightlife to suit most tastes
- Linked to sunny Cervinia in Italy



Flying Delta Airlines at 7:00 am. on Friday, Feb. 1, 2013 to Milan, Italy arriving at 7:30 am. on Saturday, Feb. 2. We connect with a bus in Milan for an approximate 4 hour trip to Tasch. At Tasch, we catch a 16 minute train to Zermatt. Saturday afternoon in Zermatt has time to sightsee, rent ski equipment, and prepare for our great week of skiing and exploring the area. Our return trip will leave Zermatt early Saturday morning Feb 9, arriving back in Houston Saturday night Feb 9 at 8:35 pm.

Dominated by Switzerland's most famous landmark - the **Matterhorn** - Zermatt is certainly the country's best all-round ski resort. Moreover, there are many who would have no hesitation in naming Zermatt as the Best Ski Resort in the World.

Partly thanks to the sublime beauty of the Matterhorn, but also thanks to the lack of cars and the resort's great sense of tradition, Zermatt has a special, alluring atmosphere, which draws visitors back time and time again.

Our hotel is the 4 \*\*\*\* Astoria, located in the old part of Zermatt. It is within a 5 minute walk of the center of the resort, the town church. It is surrounded by restaurants, bars, wine bars, cafes, and other hotels. We are in the middle of where to catch the bus to take us to one of 3 access points for the ski areas.

Skiing in Zermatt is on a vast scale. Fabulous scenery captivates your attention during your ride up the mountains. It is easy to be dazzled by the mountain world around you, being surrounded by 29 peaks over 4000m (13,100ft). *These are the highest mountains in Europe.* And most always within sight is the moody and multi-faceted Matterhorn. Cable cars (aerial tramways) are common here - being very necessary in such an imposing mountain environment. Many soar silently across chasms and up cliff faces suspended thousands of feet above the snows. But it is when you get out and snap on your skis that the real action begins.



# 2012-2013 Ski Trip Descriptions

## ZERMATT, SWITZERLAND (Cont)



All three of Zermatt's **ski areas** soar to at least 3100m (10,200ft). This translates into *excellent snow conditions*, and *long runs* to the village (5 to 8 miles). Not only are the slopes long, but they are open for a long day! Lifts begin operation at 8-8.20am and do not close until 4.30pm in midwinter. The **longest run** is from the Klein Matterhorn into town. At 3820m (12,500ft) the Klein Matterhorn lift is the highest cable car in the world. As a comparison, to stand at the top, you are higher than all the highest mountains of Austria and New Zealand. From Klein Matterhorn to Zermatt is 8 miles and vertical (7250 ft) of varied terrain. It makes for one heck of a run.

The panoramic views over much of Switzerland, deep into Italy, even to distant France are astounding. All about lays the eternal white wilderness of the high Alps.

For the non-skiers and those who want to explore, we will have several optional ideas for you. In addition, an extension to Genoa, Italy is available at the end to top off this great trip to Europe. If you have never skied Europe, this is the one for you!



## TELLURIDE-WINTER - SHOOTOUT TSC

Sat, February 9— Sat, February 16, 2013

TC: Betty Donellan Phone: 281-374-2172 cell 310-702-2090 Email: [bettyrelaw@gmail.com](mailto:bettyrelaw@gmail.com)

**Trip Prices:** Full package- \$1367 (\$1,317 cash)  
Land package - \$826 (\$791 cash)  
\$245 for lift tickets (5 days same price as 6)  
Ground: Add \$144 from Gunnison Add \$91 from Montrose  
ADVANCE RESERVATIONS REQUIRED FOR GROUND  
If coming by car, call trip leader for parking fees

**FIRST 30 PEOPLE TO PAY THEIR DEPOSIT ARE ENTERED INTO A RAFFLE FOR A GREAT PRIZE**



SHHHH! Don't **TELL** everyone **U** know we're going to **RIDE** 2/9-16, 2013 because we **only have room** for **42** people. You'll want to sign up early as SCSC will be joining other TSC clubs at the **Mountain Village** for a fabulous week in **Telluride, CO**. Staying at our first choice, the Ski In-Ski Out **Mountain Lodge** is located between 2 ski runs.

Accommodations include:

- \* Onsite: The View Restaurant and Bar
- \* Condominiums with fireplaces, gourmet kitchens and jetted tubs
- \* Daily housekeeping and complimentary wireless internet
- \* On-site ski rentals
- \* Exercise/steam/massage rooms and outdoor deck with heated pool and 2 Jacuzzis
- \* Ski lockers
- \* Free shuttle to the Mountain Village Market/Gondola and center of the village
- \* Ski in-Ski out accommodations

Your package includes:

- |                                   |  |
|-----------------------------------|--|
| * Welcome Reception at Mtn. Lodge | * Farewell Dinner with Dancing           |
| * Discount lift ticket *          | * Credentials/Lanyards                   |
| * Transportation                  | * Souvenir Pin                           |
| * Racing                          | * Naughty& Nice Party on Valentine's Day |
| * On-Mountain Tour                | * Possible Pub Crawl                     |

\*6 days ski pass same price as 5 days

There's also the FREE gondola that takes us to/from town. Since we're walking distance to Village amenities, you can choose to shop at your leisure.

Now, for the skiing! The mountain is 23% Beginner, 36% Intermediate and 41% Advanced. 33% of the mountain has snowmaking available. Want corduroy-how about easy cruising from the top for nearly 4,000 feet! We have a NASTAR course race where Space City is expecting to take home the **GOLD** and everyone is invited! We'll have a club race to compete again other TSC clubs and individuals races based upon your age group. ,



## 2012~2013 Ski Trip Descriptions

### TELLURIDE, COLORADO (Cont)

Take a break from skiing and enjoy the grill and historic saloon on the Gorrano Ranch deck and live music on the "beach". Try heli-skiing, take a snow-biking class, or choose from many other non-skiing activities which include: winter fly fishing, glider rides, ice climbing, ice skating, snowmobiling, dog sledding, guided snow shoe tours, a walking tour of historic Telluride and museums. Visit the site where Butch Cassidy robbed the San Miguel Valley Bank.

Decide fast and email me at [bettyrelaw@gmail.com](mailto:bettyrelaw@gmail.com) and let me know if you are interested in going on the trip.

We'll be taking deposits in August, but we'll need to decide soon how many we will take. Let's ensure I know everyone who wants to go and we'll make room. I can't wait!

<http://www.mountainlodgeebrochure.com/>

[www.TellurideSkiResort.com](http://www.TellurideSkiResort.com)

# TAOS

### TAOS , NEW MEXICO

SHORT Trip - **Sat, Feb 16 - Weds, Feb 20** & LONG Trip **Sat, Feb 16- Sat, Feb 23**  
(President's Day Week)

TC: Lynda Meyer Mobile: 713 775 9215 -eve or weekends

Email: [lynda\\_meyer@yahoo.com](mailto:lynda_meyer@yahoo.com) - anytime!

Trip Price:	Short trip	Full Package \$1,103* (\$1,053 cash)
		Land Package \$634 (\$599 cash)
	Long trip	Land Only Package \$947 (\$912 cash)

\*final pricing may be higher if fuel surcharges are levied

**Want to spend fewer vacation days and ski more this season?**

**Want to ski better for the rest of your life? CHOOSE TAOS!!**

### WHY CHOOSE TAOS?

Things are different in Taos - in a good way. A walk around its base area will have you convinced you were somehow transported to Europe - that's because it was founded by Swiss native Ernie Blake, and surrounded by hotels and restaurants built by Frenchmen and Austrians. Taos is a place where the quality of skiing matters. It's renowned for offering some of the most challenging terrain anywhere for experts, with half of its expert runs being rated double-diamonds. Yet for beginners and intermediates, it is home to the famous Ernie Blake Ski School - frequently named the best ski school in the country. So whether you're a beginner, intermediate, or expert, you'll find Taos will challenge, cater and care for you and offer a terrific ski vacation value. Read more about the resort [here](#).

### SLOPESIDE LODGING: THE SNAKEDANCE CONDOMINIUMS

Convenience and comfort are by-words for our trip - we'll be staying slopeside at the [Snakedance Condominiums](#) -- **less than 10 yards from the Lift One quad** - the main access point on the mountain, and walking distance to all of TSV. We'll be treated to a Welcome reception, a fleece vest for each participant, and a host hospitality dinner (at the home of the property management). Our 2 BR/2BA condos all have split kings, and wireless internet. The condo complex has an on-site restaurant and bar, spa and fitness facility, ski valet with ski storage and boot warmers, concierge services, a market and liquor store, and a courtesy van to major airports and to the town of Taos (by reservation).

### SKI ONE WEEK IN TAOS AND SKI BETTER FOR THE REST OF YOUR LIFE

One of the reasons I think Taos is so special is the Ernie Blake Ski School. If you elect to participate in 'Ski Better Week', you are destined to be a better skier for the rest of your life! Ski weeks run 5 or 6 days; include morning lessons, video analysis, NASTAR, and après ski talks. You'll be with the same instructor for the week - building a bond and working together to reach breakthrough levels in your skiing. All for just \$200 per person. Additional ski school options for children and 1<sup>st</sup> timers are also available. Participants must also purchase ski lift passes

### THE TOWN OF TAOS

Named one of America's prettiest towns by [Forbes Magazine](#), Taos is a stunningly beautiful mountain community, an artistic hub, and historic site. An easy town to walk, you can spend the day visiting galleries and art studios, historic pueblos, shop and relax in the easy-going post-hippie culture vibe it espouses. There is a public shuttle bus between TSV and the town of Taos, as well as the condo private shuttle

### AIR OPTION and LAND LOGISTICS

We've arranged direct flights between IAH and ABQ on United. The Snakedance Condos will provide our land transfers with a grocery stop en route.



# 2012-2013 Ski Trip Descriptions

## MT. BACHELOR, OREGON

Sat, February 23 - Sat, March 2, 2013

TC: Ellen Eastham Email: [eeastham@prodigy.net](mailto:eeastham@prodigy.net)

Phone: (281) 989-9935

Trip Prices: Full package: \$1,297 (\$1,247 cash))

Land package price: \$726 (\$691 cash)



Have you skied in Oregon? Join us at Mt. Bachelor to check this unique ski resort and Oregon off your list! Mt. Bachelor is a massive volcanic mountain with 72 trails and the largest ski area in the Cascade Mountains of Central Oregon. Enjoy skiing from the Summit in any direction, with 3,365 feet of total vertical drop, five different terrain parks, and 11 lifts, 7 are high speed quads. Become a "Conehead" by skiing "the Cone," a 7000' cinder cone on Mt. Bachelor's northern flank with 715' vertical. The mountain has a variety of ski trails, with runs for all levels of skiers, 40% novice/intermediate, 35% Advanced, and 25% Expert. Join up with Mt. Bachelor's Ambassador hospitality service, which are guided mountain tours every day

Due to popular demand, SCSC selected to ski Mt. Bachelor following a successful TSC trip in 2010. Prior Mt. Bachelor TC, Dennis Hughes, said the ski area is one of the friendliest he knows and it was a great ski trip for their group!

For non-ski fun and activities, Mt. Bachelor is home to the largest specialty retail shop in Oregon, while Bend offers a true shopper's paradise, Old Mill District. Try a wild, magical experience by riding with a real dog sled team, while a professional musher takes you on an hour-long exciting adventure, operated by "Oregon Trail of Dreams". Have a fun time at the Snowblast Tubing Park, an 800' tubing ride. Trip package includes a welcome party, snowshoe tour with the forest service, and 2 evenings in Bend. Take part in Bend's "Ale Trail Pub Crawl," starting at Deschutes Brewery. Microbrews, pubs, and hand-crafted beers are renowned in Central Oregon, and it is our duty to try them for evaluation, such as Brewing Companies....Three Creeks, 10 Barrel, Cascade Lakes, 5 Fusion, and many more.

Sunriver Resort is a brief 20 minute shuttle from Mt. Bachelor, also 20 minutes from downtown Bend. Superb accommodations will include the Lodge Village Suite for 4, kitchen, stone fireplace, with complimentary hot breakfast daily at the Meadows Restaurant. Featured at the resort are 6 restaurants, complimentary access to the new \$20 million aquatic center and sledding hill, work out at the Sage Springs Private Athletic Club and Spa, and relax at the three outdoor hot tubs.

For a unique activity, visit Crater Lake National Park on snowshoes. A guided tour will teach participants about forest and watershed ecology, wildlife, volcanoes and avalanches. The highlight of the trip will be the spectacular view of Crater Lake, the shimmering body of emerald blue water that fills the six-mile-wide caldera of Mount Mazama at 7100' elevation.

Our group will fly United nonstop into Portland, a scenic 4-hour bus ride to Sunriver, with a late afternoon arrival. With amazing skiing, lodging at a premier resort, a variety of non-ski activities, and a one-of-a-kind pub crawl, be sure to sign up for this trip! If you have skied all over the U.S., but not Mt. Bachelor yet, sure hope you'll join our group. To those that have skied Mt. Bachelor, return for a memorable trip.

## BIG SKY, MONTANA - TSC Final Showdown

Sat, March 9- Sat, March 16, 2013

TC: Candance Tenbrink Email: [Candace@CTenBrink.com](mailto:Candace@CTenBrink.com) Phone: 312-543-1151 ,

ATC - Abhi Gami

Trip Prices: Land Only Packages - \$963 (\$928 cash)



Gear up for a high-flying week of skiing and exploring at the TSC's Final Showdown in BIG SKY, MONTANA during Spring Break week - March 9-16, 2013.

We are offering this **FAMILY OPTIONAL** trip as **LAND ONLY** packages at this time. Full packages MAY be offered at a later date. Once you land in Bozeman, get to know your fellow travelers during the 45 minute shuttle to Big Sky (plus a pit stop to load up on groceries and goodies). Continue your conversations that evening over dinner and drinks. Or just catch up on sleep; take pictures of the breathtaking scenery J

We are staying at the Huntley Lodge Hotel, a Space City Club favorite, located near the base of the mountain (elevation 7,500 feet). The Explorer chair lift just steps from the door will get you off to a fast start in the morning and you can ski right back in to the hotel when your day is done. A large outdoor heated pool and two jetted soaking pools, roaring log fires in the lounges, free breakfast (including omelets made to order!), friendly service, high-speed wi-fi in the rooms, two comfortable queen beds, and a mini-frig to keep your evening refreshments chilled are just some of the great amenities you can look forward to. I hear that the coffee cart in the Firehole Lounge makes a killer hot cocoa!

As the sun rises the each morning, get ready to experience the time of your life. With views of Yellowstone Park from the top of Lone Peak (elevation 11,166 feet) and even three different states, we will have the world at our feet. Experts, beginners, kids, and everyone in-between will find more than enough fun and challenging terrain to explore.

# 2012~ 2013 Ski Trip Descriptions

## BIG SKY (Cont)

Big Sky has 5,532 skiable acres, 4,350 vertical feet, 220 named runs, and average snowfall of more than 400 inches! Around 40% of trails are suitable for beginner or intermediate skiers, 40% for advanced skiers, and 20% for those who have never met a slope they didn't want to conquer! There is even a six mile long run! You'll have more time to ski and less time to stand around catching your breath because there are few, if any, lines for lifts throughout the resort.

This is a TSC trip and we are planning plenty of activities so SCSC participants and TSC clubs can mix and mingle. The ski week events include:

- TSC Welcome Reception and Farewell Dinner buffet.  
Both functions promise plenty of good food, drink tickets and music.
- Club and individual NASTAR races.
- Daily - Complimentary mountain tours for intermediate ski/ snowboard
- Daily Après Ski events
- Pub crawl
- Kids tubing/pizza party
- PLUS - Discounted Lift Tickets and Ski Rentals

### **NOTE - KIDS 10 AND UNDER SKI FREE!!!!**

If you aren't skiing, need a break from the action, or perhaps just a day off to gather your strength for another assault on the mountains, there are many interesting things to do around the area. Yellowstone is a short snowmobile adventure away and Mountain Village has all the shopping and dining you could ever want to explore. With so much to do, the week is going to fly by quickly!

Sign up NOW for the best trip you'll take all year. Don't wait -- drop us a line or give us a call and we will be happy to help you get the (snow)ball rolling!

## Beaver Creek, CO

**Tues, March 5—Sun, March 10, 2013**

TC: Helene Robinson

Trip Prices: Full Package \$1,169 (\$1,119 cash)

## Beaver Creek Not Exactly Roughing It™

Do you want to squeeze in another ski vacation but short on vacation days at work?  
Space City Ski Club has the solution.

This trip was designed to let those who don't have a full week to spare have an exciting trip departing late afternoon on Tuesday, March 5, 2013 and return Sunday, March 10, 2013



There is no "land only" package due to the special days of travel.  
Package price includes air, transfers & lodging and lite continental breakfast  
**SKI to 4 DAYS!**

### Why ski Beaver Creek?

If you have never been to Beaver Creek, you have not experienced one of the Rockies truly special gems.

"Beaver Creek is a feast for the eyes, a delight for the senses. The influence of renowned resorts such as Switzerland's St. Moritz, Italy's Cortina, and Spain's Val d'Aran led to the creation of a unique mountain resort full of excitement and village luxury." AND, IT'S SO EASY TO GET TO!





## 2012~2013 Ski Trip Descriptions

### BEAVER CREEK, COLORADO (cont)

#### Flights

We depart Houston at 4:00pm, Tues. on United non-stop to Denver, arrive 5:35pm and be in our luxury condos by 8:30. We leave Denver at 7:30pm on Sunday and arrive in Houston at 10:49pm.

#### Lodging

5 Nights Lodging at The Centennial Lodge, <http://www.centennialbc.com/>

2 bedroom/2 bathroom privately owned condos each with a kitchen, fireplace and washer/dryer  
ski-in, ski out with ski storage  
Outdoor heated pool  
Hot Tub  
Concierge  
Complimentary High Speed Wireless Internet

#### Skiing

Lift Tickets:

3 Day Adult Lift Ticket - \$260 per person

4 Day Adult Lift Ticket - \$320 per person

Lift pass good for skiing Vail, Bachelor Gulch and Arrowhead, too!

### IRELAND

**Fri, Sept 6 — Sat, Sept 14, 2013**

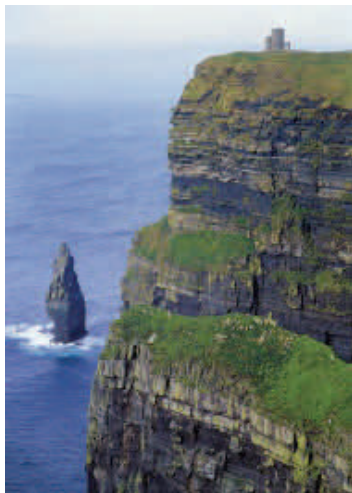
TC: Sandy Wellhausen email: [sandywp.ski@gmail.com](mailto:sandywp.ski@gmail.com) Phone: 281.996.8653

ATC: Sean O'Brien [seanobrien1981@sbcglobal.net](mailto:seanobrien1981@sbcglobal.net) 713-859-1649

Price: \$2,043.00 pp (\$1,983 cash) \$300.00 deposit

Join SCSC's trip to the beautiful Emerald Isle known as Ireland. We will depart Houston IAH Friday, September 6<sup>th</sup>. We will be spending 4 nights in the West Coast area of Limerick and then on to Dublin on the East Coast for 3 nights.

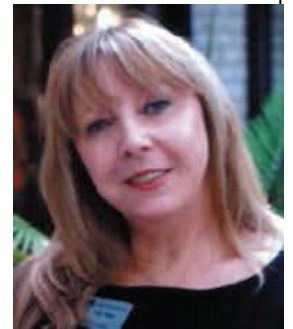
Upon arrival at Dublin airport we will be met by our driver-guide for our departure to Limerick. Along the way, we will have an opportunity to tour the Newbridge Showrooms and Museum of Style Icons. After this visit we will continue on to Kildare and visit the Irish National Stud and Japanese gardens before arriving in Limerick.



We will have an opportunity to tour the cities of Galway, Killarney, Dublin, Limerick and Wicklow. As we travel we will have the pleasure of viewing some of the most beautiful landscapes such as Connemara, the Ring of Kerry, Burren, Cliffs of Moher, MacGillycuddy's Reeks, Wicklow Mountains and the Powerscourt Gardens. We will also have an opportunity to visit a few historic sites such as Bunratty Castle, Kilkenny Castle, Glendalough, and the Rock of Cashel.

We have a choice of activities to choose from including a river cruise, pub crawl or an Irish dance party. Who knows, we might even encounter a leprechaun along the way! Or we can look for snakes (I heard St. Patrick banned them from the island). We will have an opportunity to go to several pubs to taste the Irish cuisine and the local beer, Guinness! Finally, on Saturday, September 14<sup>th</sup>, we will depart Dublin airport for either the USA or the extension of 3 nights to Scotland.

The tour price includes air between Houston and Dublin on Delta, all transfers, 4-night accommodations at a 4\* hotel in Limerick and 3-night accommodations at a 4\* hotel in Dublin, full Irish breakfast daily, 4-dinners at hotel and driver/guide for 3-days of traveling, tour of Newbridge Showrooms and Museum of Style Icons, Irish National Stud



## THE ART OF TRIP SIGN-UP AND THE FINE PRINT

Trip Sign-Up: HERE IT IS! Your chance to sign-up for your favorite SCSC ski trip(s) for 2012-2013. The sign-up form will be in the August issue of the SITZMARKE and on-line. See [www.spacecityskiclub.org](http://www.spacecityskiclub.org) to sign up online and pay by credit card on August 1. Then, wait for the trip TC to notify you if you are on the trip or come to the September meeting to verify your registration, sign the Trip Release Form and pick up additional information the TC will have for you.

1. Trip sign-up for all trips begin on **August 1**. As with last year, the sign-up does not end a few weeks later and start up again at the September meeting. Instead, it just begins. We are also continuing the process of taking sign ups either through the mail or giving your form and money directly to the TC at an SCSC event OR sign up online and pay by credit card. However, the form and money cannot be received prior to August 1 - for all trips. Any received prior to that date will be returned. Note that this is not the postmark, but when the form and money is received. You must be a current member in good standing to be added to a trip. Note that memberships are approved at the monthly Executive Committee meeting. Send in your membership by the first of the month for it to be considered at the meeting. After that, you will have to wait until the next month. Your 2012-2013 membership number should be shown on the mailing label of the SITZMARKE. Call your VP of Membership, Jan Ferrell, if you have questions
2. You may sign-up yourself and one other SCSC member per trip (plus children for Family Optional trips) (see by-law 2.8.A.)
3. In the registration envelope include the trip registration form and your deposit. The deposit for the Granada, Spain and Zermatt, Switzerland trips and Ireland trip is \$300 per participant. The deposit on all other trips is \$150 per participant. Checks are to be made payable to "SCSC" and should have your membership number and the TRIP NAME listed on the check.
4. Mail your registration to the TC's Address on the Form for the trip on which you wish to participate. TC's names are listed for all trips. For obtaining more information, telephone numbers and e-mail addresses are listed in this SITZMARKE and on the Trip Registration Form. If your registration is mailed or given to anyone other than the TC, it will be returned to you and you will not be registered for the trip.
5. If the registration meets the above guidelines, names will be added to each trip's Participant List in the order received. If a trip's participant roster is full, additional registrations received will be added to a waitlist in the order received. The TC will hold deposit checks for waitlisted members until a space becomes available on the trip. For the participants that are on trips, the checks will be deposited immediately.
6. These procedures apply to ALL members (except the trip's TC and ATC) and all Trip Participants are subject to SCSC Standing Rules, Policies and Procedures.
7. SCSC is not responsible for any problems with the U.S. Postal Service or the internet, including delayed delivery or lost mail.
8. Information shown on the Trip Schedule is subject to change. Contact the TC or ATC for up-to-date information.
9. Any registrations received, which do not meet the above qualifications, may be returned to the sender.
10. Land Packages have been approved by The Executive Committee for this year's trips. On the trips which have a limited number of available land packages, if all are filled, you will be given the option of being on a "Land Wait List" or switching to a full package.
11. Because of the restrictions noted below for land packages, be sure you have concrete travel arrangements made before you sign up for one of these. SCSC will not be responsible for any difficulties or extra expense you incur due to delayed or canceled flights or other transportation problems.

### Rules and Restrictions for Land Packages

1. The price of the land package will be the full trip price minus participant's airfare. Ground transportation will be included and available, on selected trips, to land package participants if they can meet the group at the destination airport on time. Ground transportation will not be delayed for land package participants arriving later than the group.
2. Other than the full package, this is the only package price available; no other combinations of lodging and/or transportation will be offered. (Note: As in the past, members may still arrange their own transportation, lodging, etc., and pay only for the parties and trip options. If so, please arrange to do this in advance, ideally by the pre-trip meeting.)
3. Normal cancellation policies apply: 1) the added stipulation that, on or after final payment date, land package participants must be replaced from a land package wait list and full package participants must be replaced from a full package wait list in order to receive a refund.
4. Be sure this is the package you want - It may not be possible to convert your trip from land package to full package, or vice versa. The Club may not be able to secure additional airline seats.
5. If you sign up for a land package, please notify the TC of your transportation plans in advance of the trip. The TC can tell you where to meet the group at the airport and other pertinent details.

Trip Registration Form
FOR USE BY SCSC MEMBERS ONLY

(Complete ONE Registration Form and prepare ONE deposit check PER trip)

Each envelope must contain the registration form and deposit. Deposit is \$150 per participant (\$300 for International trips).

Make the check payable to "SCSC" and write trip name and membership number(s) (from Sitzmarke address label) on the check. Also, write the trip name on the outside of the envelope.

PLEASE PRINT CLEARLY—WE MUST BE ABLE TO READ THE DATA ON THIS FORM

Trip Name: Trip Name:
Trip Dates to Trip Dates: to

Participant #1

Participant #2

Name: Name:
2012-13 Membership # 2012-13 Membership #
Address: Address:
City Zip City Zip
Phone(H) (W) Phone(H) (W)
Cell Cell
E-Mail E-Mail

Please check one: Full package Land package Please check one: Full package Land package

I understand the following (per standing rules 5.1 - 5.4): Cancellations after trip sign-up must be in writing to the Trip Coordinator and all cancellations after August 1 are subject to a \$30 per person cancellation fee. If I cancel on or after the final payment date, I may forfeit the full amount paid if I cannot be replaced on the trip. Beginning with the 2004-05 season, Trip Transfers were no longer permitted.

Signature(s) (Required)

Please mail your deposit check(s) and Trip Registration Form(s) to the appropriate Trip Coordinator (TC) below:
(Remember: Include the trip name and your membership number(s) on your check and the trip name on the outside of the envelope)

TRIP NAME	TC	Street	City, State	Zip	Telephone #
Vail, CO – Long	Judy Schiro	9206 Roy Bean	Houston, TX	77041	713-939-8235
Vail, CO – Short	Judy Schiro	9206 Roy Bean	Houston, TX	77041	713-939-8235
Deer Valley, Utah	Derek Shoobridge	121 County Road 959	Liverpool TX	77577	713-501-1032
Steamboat, CO	Anne Thomas	1306 W Park at Shady Villa	Houston, TX	77055	713-589-3660
Granada, Spain	George Lopez	4642 Hickory Downs	Houston, TX	77084	856-296-9399
Zermatt, Switzerland	Arlen Isham	25114 Derbybrook Court	Katy, TX	77494	713-560-0187
Telluride, CO	Betty Donellan	P.O. Box 12013	Spring, TX	77391	281-374-2172
Taos, New Mexico Long	Lynda Meyer	12322 Moorcreek Dr.	Houston, TX	77070	713-775-9215
Taos, New Mexico Short	Lynda Meyer	12322 Moorcreek Dr.	Houston, TX	77070	713-775-9215
Mt. Bachelor, OR	Ellen Eastham	2045 Lee Road	Pearland, TX	77581	281-989-9935
Beaver Creek, CO	Helene Robinson	18445 Hwy 105 W, Ste 102-260	Montgomery, TX	77356	954-253-1681
Big Sky, Mt	Candace TenBrink	4222 Oberlin	W University, TX	77005	312-543-1151
Ireland	Sandy Wellhausen	2408 Creekridge Drive	Pearland, TX	77581	281-996-8653



## Calendar of Events

- 08/04/12 **"Life Could Be A Dream", Stages Theatre**, 3201 Allen Parkway, Houston, TX 77019, 8:00 p.m  
(optional dinner at Pei Wei at 6:30.)
- 08/13/12 **Special Trip Sign-Up Meeting** The Hess Club, 5430 Westheimer Rd, Houston, TX 77036,  
6:30 to 8:30
- 08/23/12 **Happy Hour** at The G Bar, 15455 Memorial Dr, Houston, TX 77079- 5:30 to 9:00 PM  
Free Valet parking - Valets working for tips only. Light snacks - happy hour prices
- 09/10/12 **September General Meeting**, The HESS Club, 5430 Westheimer Rd, Houston, TX 77036, 6:30 to 8:30
- 09/12/12 **Start of SCSC Wednesday night dance lessons** with Pro Michael Stephens at the Dance Place, 3300  
Chimney Rock, Suite 500, Houston, TX 77058, 8 weeks every Wed. ending October 31<sup>st</sup> with  
Halloween Party on the last night which is 10-31! First 4 weeks is two step/ last 4 weeks is waltz.
- 09/16/12 **The Triple P Pool Party**, at the Kuper's, 8 Rain Hollow Place, Houston, TX 77024, 2:00 to 8:00 p.m.
- 09/27/12 **September Happy Hour** - Concert Pub - Galleria, 5636 Richmond Ave, Houston, TX 77057  
5:30 to 9:00 - Chips / Salsa for our Group.Full menu available.
- 10/08/12 **October General Meeting** — The HESS Club, 5430 Westheimer Rd, Houston, TX 77036, 6:30 to 8:30
- 10/25/12 - **October Happy Hour** —First Tee Pub, 12589 Whittington Dr., Houston, TX 77077 281 556 1691 Light  
Snacks for our group + happy hour prices/ patio. Thursdays is always Grilled Steak night at First  
Tee. \$12 for steak, potato and salad.

### Space City Ski Club

President  
VP of Activities  
VP of Trips  
VP of Mbrship  
VP of Pub  
Treasurer  
Secretary  
Dir of Trips  
Dir of Trips  
Dir of Comm  
Auditor

### 2011-2012 Executive Committee

Sandra McCunis  
Cindy Moore  
Ann Rogers  
Jan Ferrell  
Leyla Ozkardesh  
Chuck Pena  
Sarah Granberry  
Jim Hodges  
Susan Blome  
Lynda Meyers  
Keith Kirkman

semccunis@aol.com

tscvpoffs@gmail.com

rogersae@msn.com

jferrell123@att.net

leylajoz@sbcglobal.net

penaca23@gmail.com

sarahgranberry@sbcglobal.net

jehodges@sbcglobal.net

sdblome@aol.com

Lynda\_meyer@yahoo.com

keithakirkman@comcast.net

### Board of Directors

281-463-7717

713-984-1060

281-313-2234

713-663-7699

281-584-9723

713-662-0493

281-829-6155

713-791-3614

281-894-4203

Sandy Wellhausen, Chairman  
Roger Holzman  
Leslie Ward  
Penny Chancery  
Jose Araujo  
Bill Bomberger  
Ross Baker  
Steve Slade

PRST STD  
U.S. POSTAGE  
PAID  
HOUSTON, TX  
Permit No. 383

**SCSC**  
Space City Ski Club  
P.O. Box 22567  
Houston, TX 77227-2567